

Sep 14, 2012

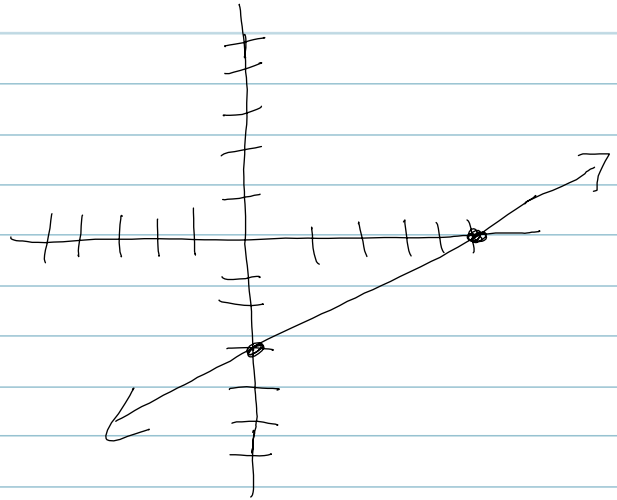
Section 3.3

Graphing Lines

① Intercept method

$$3x - 5y = 15$$

x	y
0	-3
5	0



$$\begin{aligned}x &= 1 \\3(1) - 5y &= 15 \\3 - 5y &= 15 \\-5y &= 12 \\y &= \frac{12}{-5} \\y &= -2\frac{2}{5}\end{aligned}$$

Sep 14, 2012

② Slope - Intercept Method

$$3x - 5y = 15$$

$$-5y = -3x + 15$$

$$y = \frac{-3}{-5} + \frac{15}{-5}$$

$$y = \frac{3}{5}x - 3$$

$$m = \frac{3}{5}$$

$$(0, -3)$$

$$y = mx + b$$

